

**USB-RS232 Converter
USB-RS422/485 Converter**

User's Manual

(M 981 224/ 02A)

(c) CIRCUTOR S.A.

INDEX

1.- INFORMATION	3
2.- INSTALLATION	5
3.- REMOVE DRIVER SOFTWARE	8
4.- TECHNICAL AND OPERATIONAL DESCRIPTION	9
5.- SPECIFICATIONS.....	11
6.- NOTES	11

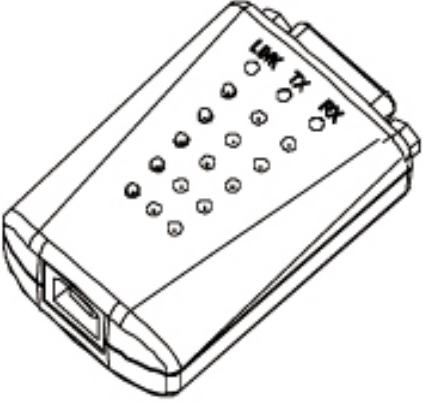




FCC COMPLIANCE STATEMENT

This equipment has been tested and found to comply with the limits for a Class A digital device, pursuant to Part 15 of the FCC Rules. These limits are designed to provide reasonable protection against harmful interference when the equipment is operated in a commercial environment. This equipment generates, uses, and can radiate radio frequency energy and, if not installed and used in accordance with the instruction manual, may cause harmful interference to radio communication.

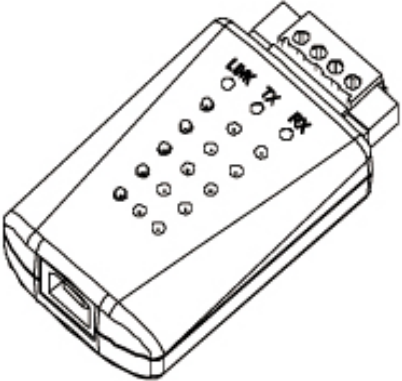




Operation of this equipment in a residential area is likely to cause harmful interference in which case the user will be required to correct the interference at his own expense.

1.- Information

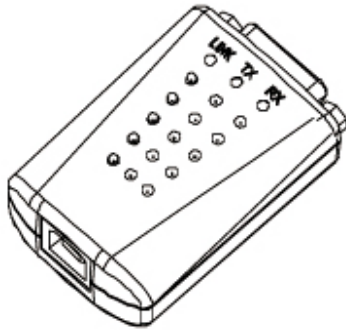
- USB-RS232 Converter

MACHINE TYPE	FUNCTION
 <p data-bbox="425 894 602 926">USB-RS232</p>	<div data-bbox="841 478 1068 617"> <p data-bbox="862 495 1045 527">USB Ver 1.1</p>  </div> <div data-bbox="1146 478 1373 617"> <p data-bbox="1157 489 1362 520">Multiple Port</p>  </div> <div data-bbox="841 743 1068 882"> <p data-bbox="854 743 992 800">LED STATUS</p>  </div> <div data-bbox="1146 743 1373 882"> <p data-bbox="1206 758 1313 789">RS232</p>  </div>

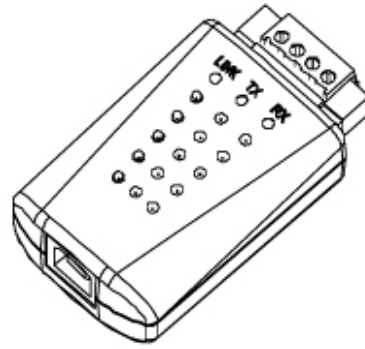
- USB-RS422/485 Converter

MACHINE TYPE	FUNCTION
 <p data-bbox="393 1598 630 1629">USB-RS422/485</p>	<div data-bbox="841 1201 1068 1339"> <p data-bbox="862 1218 1045 1249">USB Ver 1.1</p>  </div> <div data-bbox="1146 1201 1373 1339"> <p data-bbox="1157 1211 1362 1243">Multiple Port</p>  </div> <div data-bbox="841 1465 1068 1604"> <p data-bbox="854 1465 992 1522">LED STATUS</p>  </div> <div data-bbox="1146 1465 1373 1604"> <p data-bbox="1166 1476 1343 1507">RS-422/485</p>  </div>

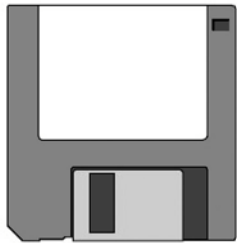
- Standard Package



**Main Unit
(USB-RS232)**



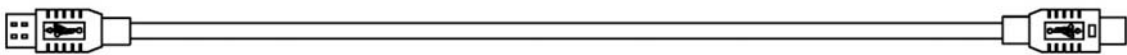
**Main Unit
(USB-RS422/485)**



Driver disk



User's manual in PDF



USB Cable

2.- Installation

- Driver software installation

1. Connect **USB-RS232/422/485** converter into the **USB** port of your computer first.
2. Under **Windows 98/2000/Me/XP**, put disk drivers into the floppy disk driver, it will automatically install the **USB-RS232/422/485** driver software into your computer by following the steps as below:
3. This wizard searches for new drivers for **USB Device**



4. What do you want Windows to do?



5. Select Searching locations for new driver



6. Windows is now ready to install the best driver



7. Windows has finished installing the software



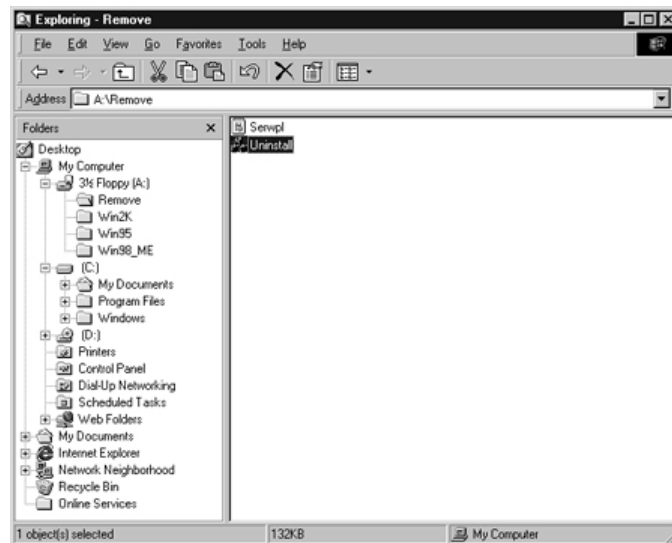
8. Make sure if the driver software installation is finished

Connect converter into the USB port of the computer and then Click "Start" -> "Settings" -> "Control Panel" -> "System" -> "Device Manager" to see if there are "CIRCUTOR USB-RS232/422/485 (COMX)" at Ports and "CIRCUTOR USB-RS232/422/485" at Universal Serial Bus controllers.

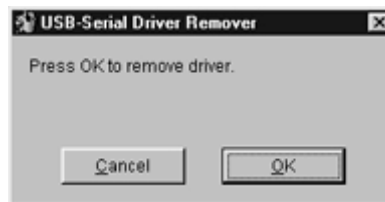


3.- Remove driver software

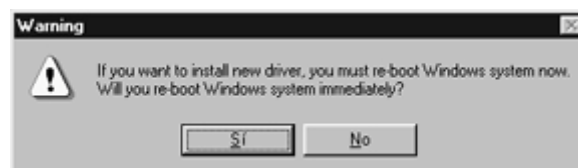
- How to remove USB-RS232/422/485 driver software from your computer
1. Put driver disk into the floppy disk driver of the computer and then find and execute Uninstall.exe by following the steps as below:
 2. Execute Uninstall.exe



3. Confirm to execute Remove program

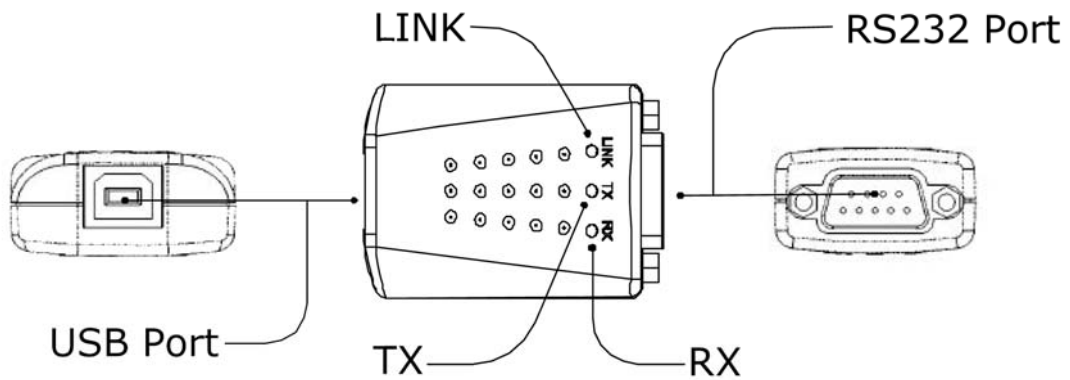


4. Re-boot the Computer after remove program is done

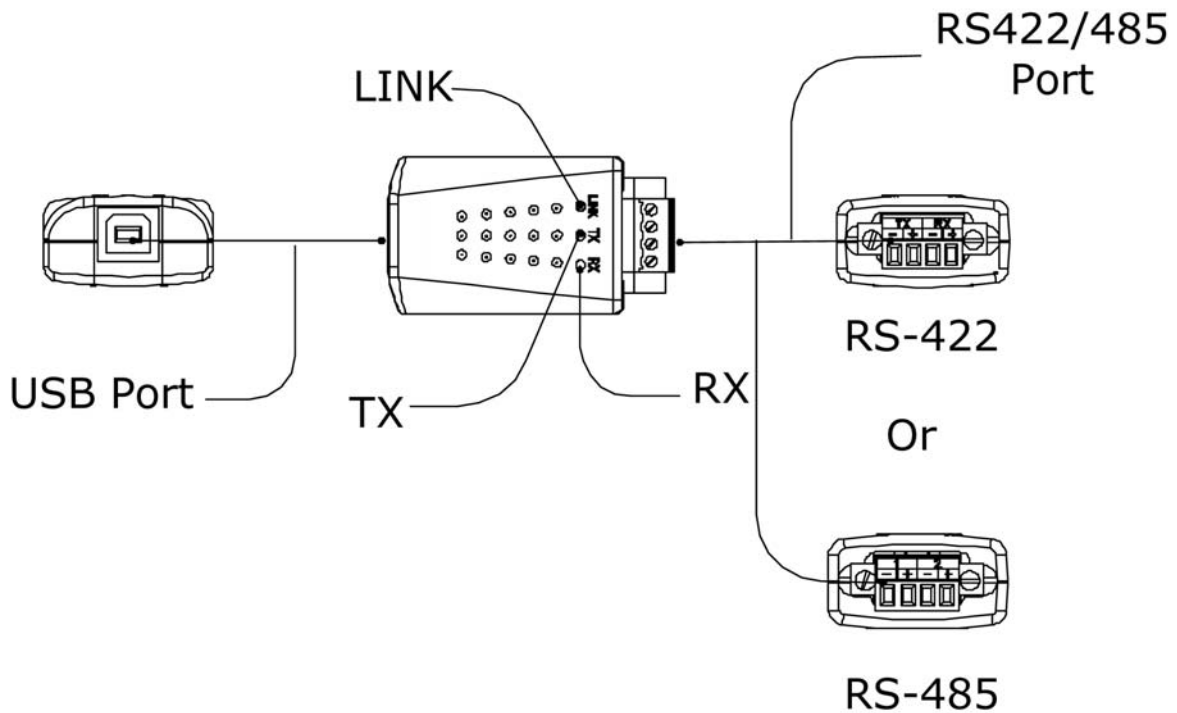


4.- Technical and operational description

- **Front panel of USB-RS232**



- **Front panel of USB-RS422/485**

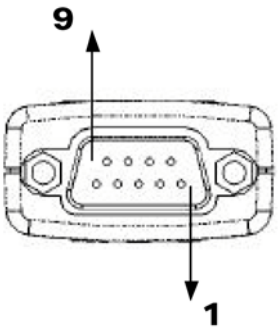


Remark: One USB-RS485 converter can be used for connecting two unit of RS-485 devices.

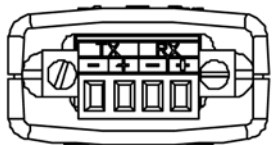
▪ **Operation of USB-RS232/422/485 converters**

- ✓ RS232/422/485: Connecting with the terminal device, which is equipped with RS-232/422/485 interface.
- ✓ USB: Connecting with the computer USB port or Hub.
- ✓ LINK: LINK LED turns on when the USB-RS232/422/485 unit is ready for use.
- ✓ TX: TX LED turns on when the data is sending from USB port to RS-232/422/485 device.
- ✓ RX: RX LED turns on when the data is sending from RS-232/422/485 device to USB port.

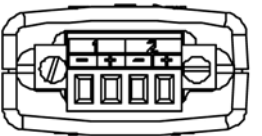
▪ **RS-232 PIN FUNCTION**

	PIN No.	I/O	DESCRIPTION
	1	I	Data carrier detect
	2	I	Received data
	3	O	Transmitted data
	4	O	Data terminal ready
	5	X	Signal ground
	6	I	Data carrier
	7	O	Request to send
	8	I	Clear to send
	9	I	Positive dc TEST

▪ **RS-422 PIN FUNCTION**

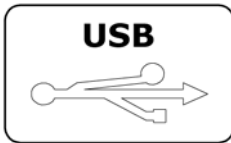
	PIN		DESCRIPTION
	Tx	-	RS-422 Tx -
		+	RS-422 Tx +
	Rx	-	RS-422 Rx -
+		RS-422 Rx +	

▪ **RS-485 PIN FUNCTION**

	PIN	DESCRIPTION

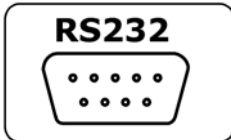
1	-	RS-485 -
	+	RS-485 +
2	-	RS-485 -
	+	RS-485 +

5.- Specifications



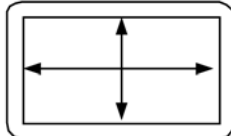
USB Interface

Full compliance with the USB specification v1.1



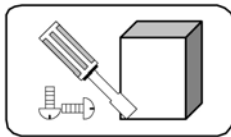
RS-232 Interface

RS-232, Full, 8N1, max 120 Kbps



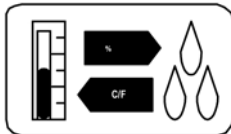
Dimensions

D 18.8 x W 35 x H 56 mm



Mounting

Any surface



Environment

Operating temperature: 0 ~ 55 °C

Storage temperature: -10 ~ 55 °C

Humidity: 10% ~ 90% relative

6.- Notes

- **Do not disconnect the converter during running your application program to avoid any unexpected problem.**
- **USB-RS232/422/485 driver software provides maximum 8 converters to be used for multiple device communication. The addresses of the multiple devices are according to the serial port addresses of the PC or the addresses of the port HUB USB where the devices are connected.**
- **The converter does not work with DOS system. Only Win98/2000/Me support USB.**
- **You must connect the converter into the USB port of your computer before you start driver software installation.**

- **After the converter is connected into USB port of the computer which is with the driver software installed, LINK LED will turn on to be ready for use, otherwise unplug the converter and try again after 5 seconds or longer.**