

Devolinx[®]



Serial-Ethernet Server

STE-501C

Quick Start Guide

Version 1.3

aaxeon[®]

AAXEON TECHNOLOGIES, INC.

www.aaxeon.com

This document is intended to provide customers with brief descriptions on the product and to assist customers to get started. For detail information and operations of the product, please refer to the user's manual in the product CD.

1.Packaging

Please check your package contains the following items:

- STE-501C Serial Server
- Quick Start Guide
- Product CD
- Wall mounting screws
- 3 pin terminal block for power input

2.Hardware Setup

STE-501C interfaces

NOTE:

One can press the reset button of the STE-501C to reset the settings to the default value

Figure 2.1 shows the interfaces.

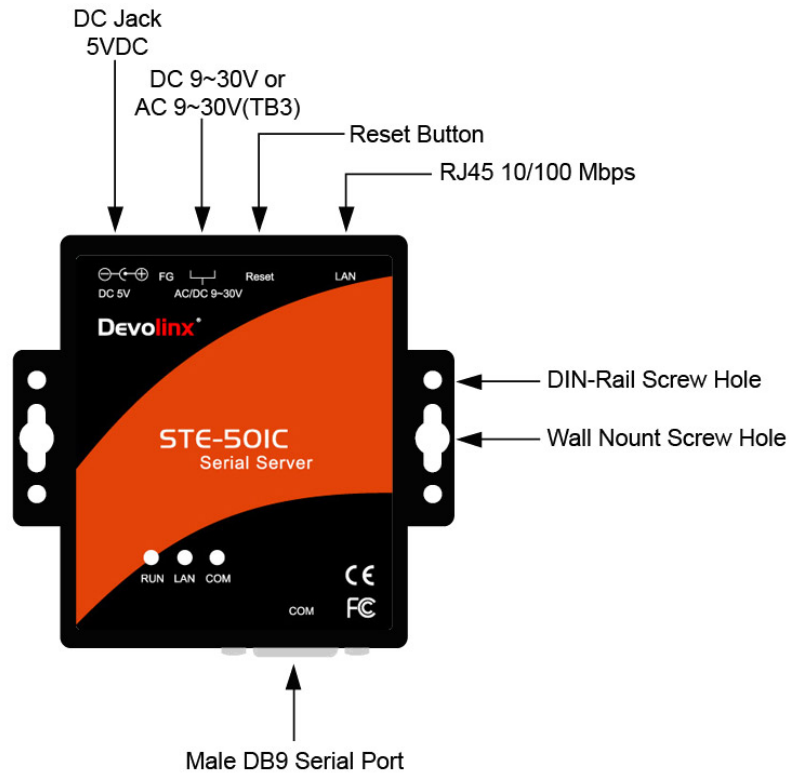


Figure 2.1. STE-501C Interface

LED Indicators:

LAN LED

Message	Description
Off	Ethernet Disconnected
Blinking with Green	Data is transmitting on Ethernet for 100Mbps
Blinking with Orange	Data is transmitting on Ethernet for 10Mbps

Table 1. LAN LED Message

COM Port LED

Message	Description
Off	No data is transmitting on COM port
Blinking	Data is transmitting on COM port

Table 2. COM Port LED Message

RUN LED

Message	Description
On	Jumper JP1 Pin1 and Pin2 are shorted to disable AP firmware running
Blinking (rate: 0.5 Sec)	AP firmware is running normally

Table 3. RUN LED Message

Installation Procedures:

Step 1: Connect the STE-501C to the power source using 5V DC Jack
 (or 9~30V DC Terminal Block power source)

Note: STE-501C provides two power inputs that can be connected simultaneously to live DC power sources. If any one of the power inputs fails, the other live source acts as a backup to support power needs automatically. The redundant dual DC power inputs give an extra assurance of non-stop operation

Step 2: Connect the STE-501C to ones Ethernet network. Use a standard straight-through Ethernet cable when one connect it to a hub/switch, one also can connect it to ones PC's Ethernet port via a cross-over Ethernet cable for easy set up. However, in this case one need to make sure ones PC is in the same network sub-net as the STE-501C.

Step 3: Connect the STE-501C's serial port to a serial device.

Step 4: Placement options. One can mount the STE-501C to a wall/panel (Mounting screws included) or Din-Rail rack (Require optional item model: Din-Rail-Kit).

3. Software Setup

Default Network Setting:	Default User Name/Password:
IP: 10.0.50.100	User Name: admin
Gateway: 10.0.0.254	Password: null (leave it blank)
Subnet: 255.255.0.0	

Auto IP (Dynamic IP):

A DHCP server can automatically assigns the IP address and network settings. The STE-501C supports the DHCP function. By default, the DHCP function on the STE-501C is disabled; you can use Monitor.exe to enable this function. (ref Figure 3.1)

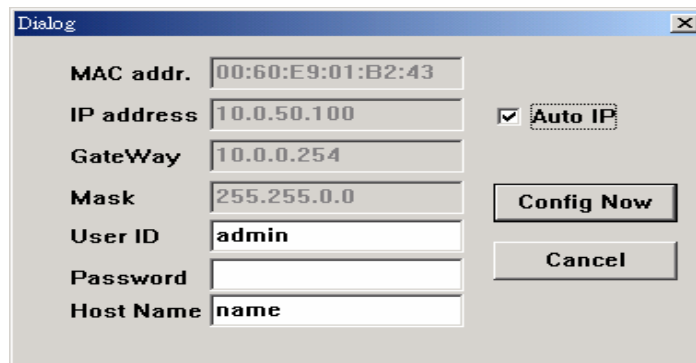


Figure 3.1. monitor.exe utility Dialog Window

Assign a Static IP address by:

A. Using Telnet

1. Telnet to the STE-501C using DOS command "**Telnet IP_address**". Example: telnet 10.0.50.100
2. Network, Link Mode, and COM Ports settings can be configured in the telnet window

B. Using Monitor.exe Utility

Use **Monitor.exe** which comes inside the Product CD to automatically search for all STE-501Cs connected to ones local area network. Then please select the desired STE-501C to configure the network setting individually.

C. Using Web Browser

1. Make sure ones PC is located on the same network sub-net as the STE-501C
2. Open a web browser, then type in the IP address of the STE-501C to be configured. Default user name is **admin** and default password is **null (leave it blank)**.
3. The STE-501C's network, link mode and COM ports settings can be configured in different web pages.
4. Click "**Save Configuration**" to save settings.
5. Click "**Restart**" button to make the change effective if necessary.

4. Pin Assignments

The pin assignments of DB9 connector on the STE-501C is shown in the following table:

Pin#	RS-232 Full Duplex	RS-485 2-wire Half Duplex	RS-422/RS-485 4-wire Full Duplex
1	DCD	N/A	N/A
2	RXD	N/A	TXD+
3	TXD	DATA+	RXD+
4	DTR	N/A	N/A
5	SG (Signal Ground)	SG (Signal Ground)	SG (Signal Ground)
6	DSR	N/A	N/A
7	RTS	DATA-	RXD-
8	CTS	N/A	TXD-
9	N/A	N/A	N/A

Customer Services and Supports

1. Contact your local dealers or Aaxeon Technical Support Center at the following numbers.
 - 1-877-AAAXEON5 (1-877-229-3665)
 - 1-714-671-9000
2. Report the errors via website or e-mail
www.aaxeon.com / support@aaxeon.com